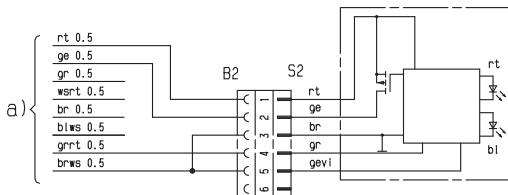


## Circuit Diagrams – Airtronic Mini-Controller

Connection to Airtronic, Airtronic M, Airtronic L



3.1.17



### Connector housing pin assignment -S2

#### 3.1.17 Airtronic Mini-Controller

- a) to the heater
- rt Power supply, positive, terminal 30
- ge Switch-on signal S+
- gr Actual temperature value
- wsrt Switch off the anti-theft alarm system
- br Power supply, negative, terminal 31
- blws Diagnostics
- grrt Temperature setpoint value
- brws Reference signal sensor

#### Cable colours

|    |       |    |        |    |       |
|----|-------|----|--------|----|-------|
| rt | red   | gr | grey   | sw | black |
| bl | blue  | ge | yellow | gn | green |
| ws | white | vi | violet | br | brown |

Insulate unused cable ends. Connector housing chamber assignment (assignment seen from the cable inlet side).

#### **i** Please note!

- Please find further information on the device installation and connection on the enclosed CD.

#### **i** Please note!

- When installing the connector, ensure that the locking tangs always face the middle of the connector.

**Headquarters:**  
 Eberspächer Climate  
 Control Systems GmbH  
 Eberspächerstraße 24  
 73730 Esslingen  
 info@eberspaecher.com  
 www.eberspaecher.com